



**idp**



# **17TH IDP AUSTRALIAN INTERNATIONAL EDUCATION CONFERENCE**

*securing the FUTURE for International Education:  
Managing growth and Diversity*



# **Associate Degree: Advanced Diploma**

## **Is it Really Important?**



Ros Cheales

Director Educational Services

Southbank Institute

# Associate Degree: Advanced Diploma

## Is it Really Important?



### Common Goals:

- High Quality Learning Experience
- Competitive in global market
- High international student enrolments



# Associate Degree: Advanced Diploma Is it Really Important?



- Recent changes to the Australian Qualifications Framework
- Patterns of Enrolment
- Untapped potential of Advanced Diplomas
- A Way Forward: Client Centred Approach



# Associate Degree: Advanced Diploma Is it Really Important?



- New two-year qualification
- Accredited against higher education
- Positioned alongside Advanced Diploma
- Distinctive outcomes
- Universities and non self-accrediting institutions – TAFE's and private RTO's



# Associate Degree: Advanced Diploma Is it Really Important?



## National perspective in 2001

- Associate Degrees – 50 overseas students
- Advanced Diploma – 125 o/s
- Higher education enrolments - 112,342 o/s
- VET enrolments – 30,759 o/s



Source: DEST Higher Education Student Statistics, 2001

# Associate Degree: Advanced Diploma Is it Really Important?



2001 Associate Degrees:

Bond University (1)

Charles Stuart University (8)

Curtain University of Technology (14)

Deakin University (3)

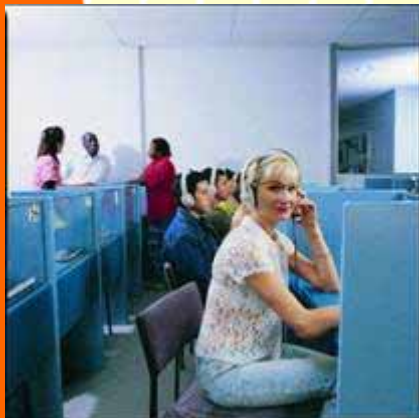
Edith Cowan University (7)

Northern Territory University (7)

Queensland University of Technology (1)

Southern Cross University (11)

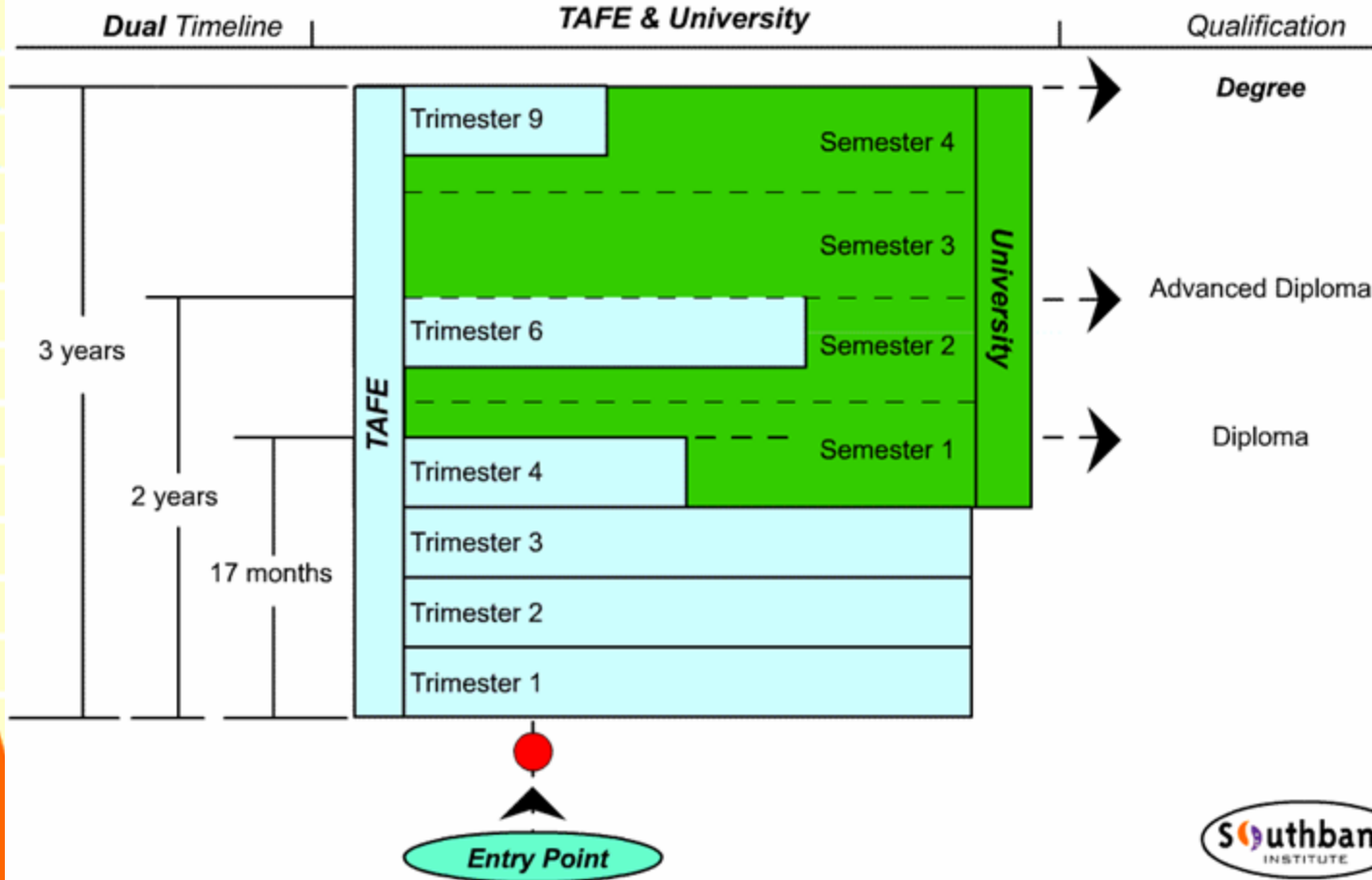
The University of Southern Queensland (15)



# Associate Degree: Advanced Diploma

## Is it Really Important?

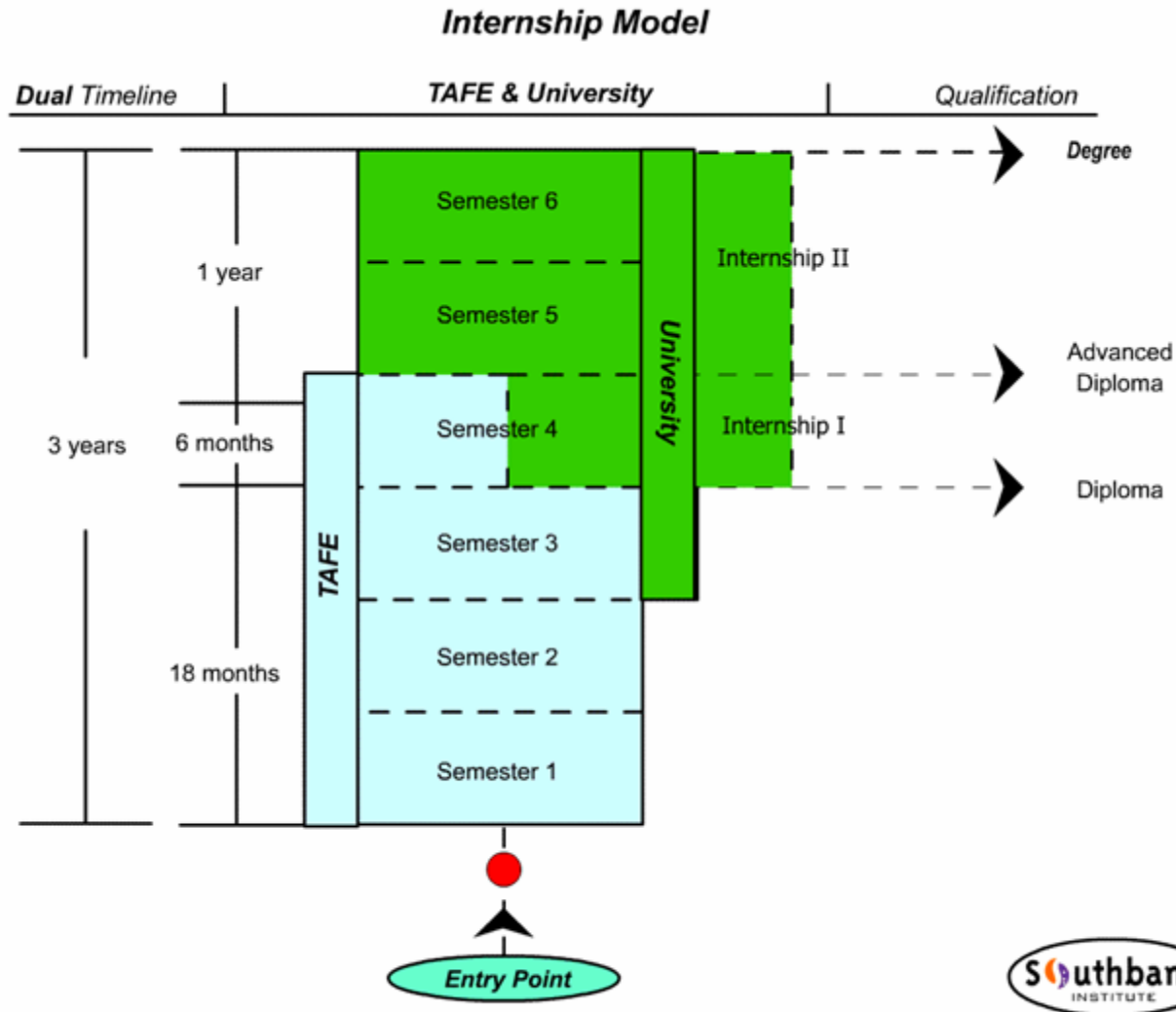
### Trimester/Semester Dual Award



● = Tertiary Entrance



# Associate Degree: Advanced Diploma Is it Really Important?

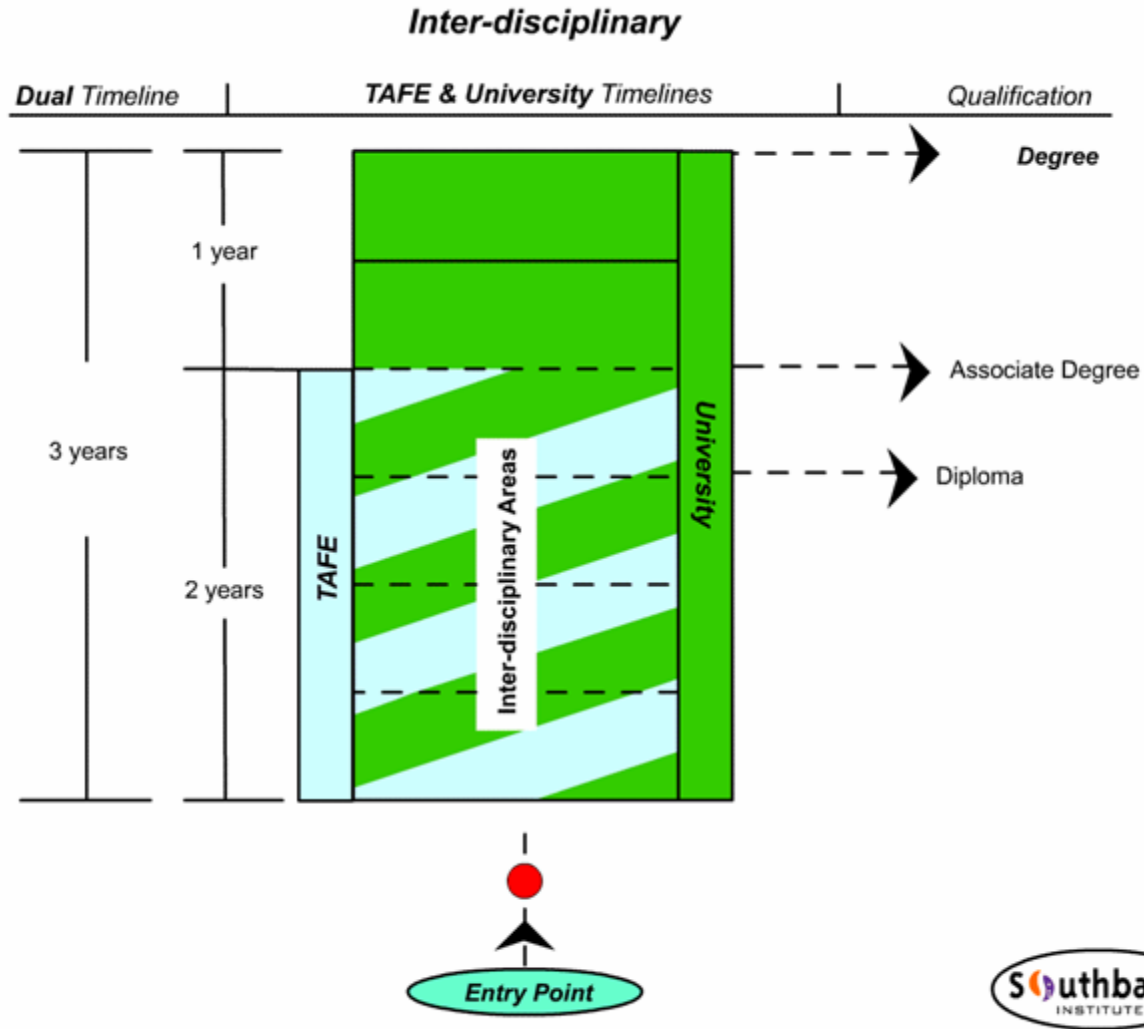


● = Tertiary Entrance



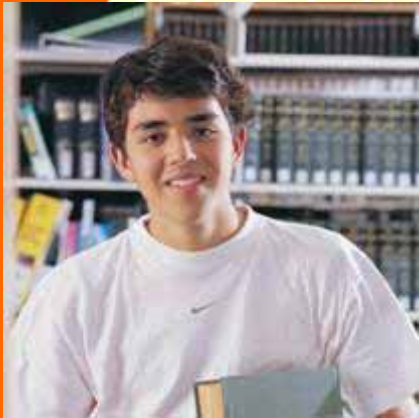
# Associate Degree: Advanced Diploma

## Is it Really Important?



● = Tertiary Entrance

# A client-centred approach



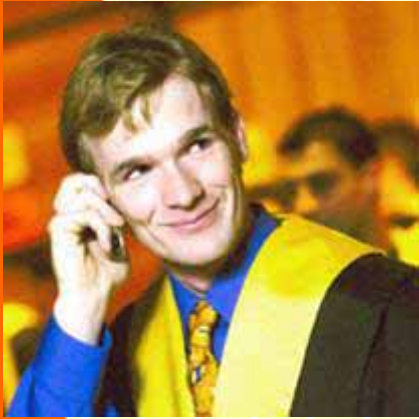
## Focus:

- Educational needs of international students
- Innovation with articulation and pathways in learning
- Importance on employability as an outcome
- Future in research – Postgraduate student???



# Associate Degree: Advanced Diploma

## Is it Really Important?



IF the educational experience is high quality then the degree outcomes will follow

